

Amendment #1

Figure 1

Offshore Artificial Reef Sites



Artificial Reef Site

NOT FOR NAVIGATION



Based on NOAA Nautical Chart 11737
Mississippi Sound + Appr (Dauphin Island to Cat Island)
--FOR PLANNING PURPOSES ONLY--

Reef Center Points		
Fish Haven	Longitude	Latitude
FH-1	-88 36.648	30 03.552
FH-2	-88 33.9	30 05.202
FH-3	-88 45.03	30 09.918
FH-4	-88 53.802	30 10.302
FH-5	-88 50.352	30 10.728
FH-6	-88 41.7	30 01.902
FH-7	-88 24.102	29 37.098
FH-8	-88 57.702	30 16.002
FH-9/11	-89 04.854	30 12.102
FH-10	-88 38.952	30 15.93
FH-12	-88 45.75	30 01.848
FH-13	-88 30.852	30 01.188
FH-14	-88 49.8	30 12.318
Cat Island Reef	-88 53.952	30 15.648

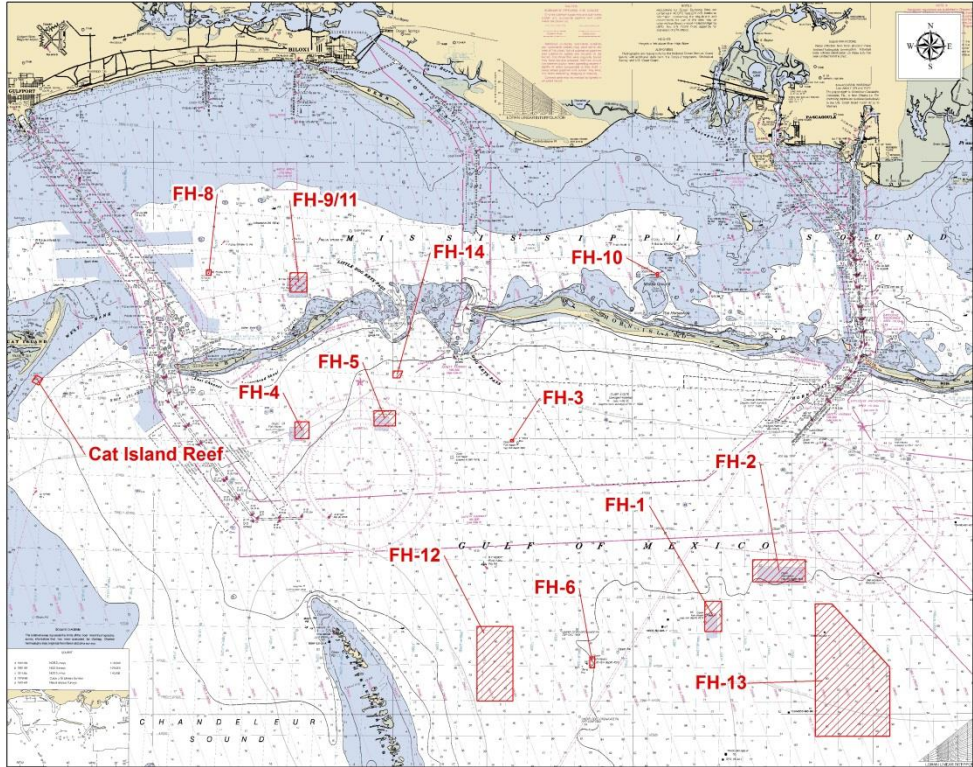
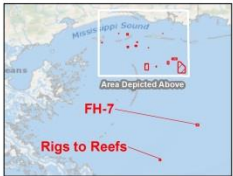


Figure 1: Offshore Artificial Reef Map

Table 1

Offshore Artificial Reef Coordinates			
Site	Description	Lat.	Long.
FH-1	NW Corner Coordinate	30 04.100N	88 37.000W
	NE Corner Coordinate	30 04.100N	88 36.300W
	SW Corner Coordinate	30 03.000N	88 37.000W
	SE Corner Coordinate	30 03.000N	88 36.300W
FH-2	NW Corner Coordinate	30 05.600N	88 35.000W
	NE Corner Coordinate	30 05.600N	88 32.800W
	SW Corner Coordinate	30 04.660N	88 35.000W
	SE Corner Coordinate	30 04.660N	88 32.800W
FH-3	NW Corner Coordinate	30 09.960N	88 45.100W
	NE Corner Coordinate	30 09.960N	88 44.960W
	SW Corner Coordinate	30 09.880N	88 45.100W
	SE Corner Coordinate	30 09.880N	88 44.960W
FH-4	NW Corner Coordinate	30 10.600N	88 54.100W
	NE Corner Coordinate	30 10.600N	88 53.500W
	SW Corner Coordinate	30 10.000N	88 54.100W
	SE Corner Coordinate	30 10.000N	88 53.500W
FH-5	NW Corner Coordinate	30 11.000N	88 50.800W
	NE Corner Coordinate	30 11.000N	88 49.900W
	SW Corner Coordinate	30 10.450N	88 50.800W
	SE Corner Coordinate	30 10.450N	88 49.900W
FH-6	NW Corner Coordinate	30 02.100N	88 41.800W
	NE Corner Coordinate	30 02.100N	88 41.600W
	SW Corner Coordinate	30 01.700N	88 41.800W
	SE Corner Coordinate	30 01.700N	88 41.600W
FH-7	NW Corner Coordinate	29 37.500N	88 24.700W
	NE Corner Coordinate	29 37.500N	88 23.500W
	SW Corner Coordinate	29 36.700N	88 24.700W
	SE Corner Coordinate	29 36.700N	88 23.500W
FH-8	NW Corner Coordinate	30 16.100N	88 57.800W
	NE Corner Coordinate	30 16.100N	88 57.600W
	SW Corner Coordinate	30 15.900N	88 57.800W
	SE Corner Coordinate	30 15.900N	88 57.600W
FH-9/11	NW Corner Coordinate	30 16.000N	88 54.300W
	NE Corner Coordinate	30 16.000N	88 53.600W
	SW Corner Coordinate	30 15.300N	88 54.300W
	SE Corner Coordinate	30 15.300N	88 53.600W
FH-10	NW Corner Coordinate	30 16.000N	88 39.000W
	NE Corner Coordinate	30 16.000N	88 38.900W
	SW Corner Coordinate	30 15.860N	88 39.000W
	SE Corner Coordinate	30 15.860N	88 38.900W
FH-12	NW Corner Coordinate	30 03.200N	88 46.500W
	NE Corner Coordinate	30 03.200N	88 45.000W
	SW Corner Coordinate	30 00.500N	88 46.500W
	SE Corner Coordinate	30 00.500N	88 45.000W
FH-13	NW Corner Coordinate	30 04.000N	88 32.400W
	NE1 Corner Coordinate	30 04.000N	88 31.700W
	NE2 Corner Coordinate	30 01.700N	88 29.300W
	SW Corner Coordinate	29 59.200N	88 32.400W
	SE Corner Coordinate	29 59.200N	88 29.300W
FH-14	NW Corner Coordinate	30 12.440N	88 49.999W
	NE Corner Coordinate	30 12.440N	88 49.720W
	SW Corner Coordinate	30 12.200N	88 49.999W
	SE Corner Coordinate	30 12.200N	88 49.720W
Cat Island	NW Corner Coordinate	30 12.282N	89 04.899W
	NE Corner Coordinate	30 12.152N	89 04.631W
	SW Corner Coordinate	30 12.053N	89 05.068W
	SE Corner Coordinate	30 11.929N	89 04.790W

Table 1: Offshore Artificial Reef Boundary Coordinates

Figure 2

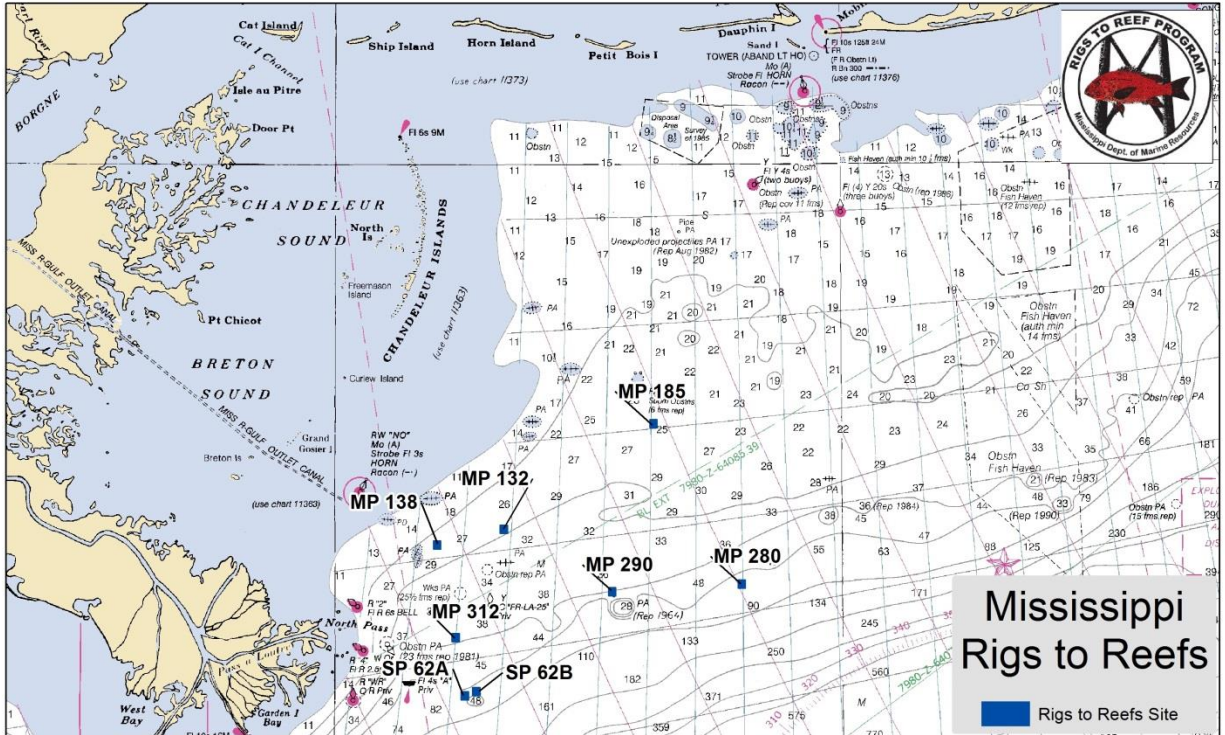


Figure 2: Rigs to Reef Artificial Reef Map

Table 2

Rigs to Reef Corner Coordinates			
Site	Description	Lat.	Long.
SP 62 A	NW Corner Coordinate	29 05.200N	88 45.032W
	NE Corner Coordinate	29 05.392N	88 44.512W
	SW Corner Coordinate	29 04.592N	88 44.742W
	SE Corner Coordinate	29 04.783N	88 44.222W
SP 62B	NW Corner Coordinate	29 05.595N	88 43.816W
	NE Corner Coordinate	29 05.849N	88 43.124W
	SW Corner Coordinate	29 04.986N	88 43.527W
	SE Corner Coordinate	29 05.241N	88 42.834W
MP 132	NW Corner Coordinate	29 22.641N	88 40.500W
	NE Corner Coordinate	29 22.641N	88 39.700W
	SW Corner Coordinate	29 21.930N	88 40.500W
	SE Corner Coordinate	29 21.930N	88 39.700W
MP138	NW Corner Coordinate	29 20.935N	88 48.255W
	NE Corner Coordinate	29 20.920N	88 47.502W
	SW Corner Coordinate	29 20.275N	88 48.272W
	SE Corner Coordinate	29 20.260N	88 47.519W
MP 280	NW Corner Coordinate	29 16.703N	88 12.190W
	NE Corner Coordinate	29 16.690N	88 11.664W
	SW Corner Coordinate	29 16.332N	88 12.202W
	SE Corner Coordinate	29 16.319N	88 11.675W
MP 312	NW Corner Coordinate	29 11.339N	88 46.084W
	NE Corner Coordinate	29 11.324N	88 45.332W
	SW Corner Coordinate	29 10.679N	88 46.101W
	SE Corner Coordinate	29 10.664N	8 45.349W
MP 185	NW Corner Coordinate	29 33.459N	88 22.546W
	NE Corner Coordinate	29 33.447N	88 22.018W
	SW Corner Coordinate	29 32.997N	88 22.560W
	SE Corner Coordinate	29 32.985N	88 22.032W
MP 290	W Corner Coordinate	29 15.598N	88 27.673W
	N Corner Coordinate	29 16.139N	88 27.242W
	NE Corner Coordinate	19 15.934N	88 26.907W
	SE Corner Coordinate	29 15.389N	88 26.922W

Table 2: Rigs to Reef Artificial Reef Boundary Coordinates