



MISSISSIPPI DEPARTMENT OF MARINE RESOURCES
1141 Bayview Avenue, Biloxi, Mississippi 39530

News Release

Contact: Shelly Becker
Phone: 228-523-4051

12-78-SB
November 9, 2012

FOR IMMEDIATE RELEASE

Additional Waters to Open for Shrimping November 12

BILOXI, Miss. – Additional waters will open at 6 a.m., Monday, Nov. 12, 2012, for shrimping by the Mississippi Commission on Marine Resources. All waters south and west of a line beginning at beacon “18” in the Biloxi Bay Channel, and then running northwesterly to beacon “22” in the Biloxi Bay Channel, then northwesterly to beacon “26” in the Biloxi Bay Channel, then westerly to beacon “34”, exclusive of the Biloxi Channel itself, then westerly to beacon “30” in the Biloxi Channel, exclusive of the Biloxi Channel itself, and then due south to a point on Deer Island.

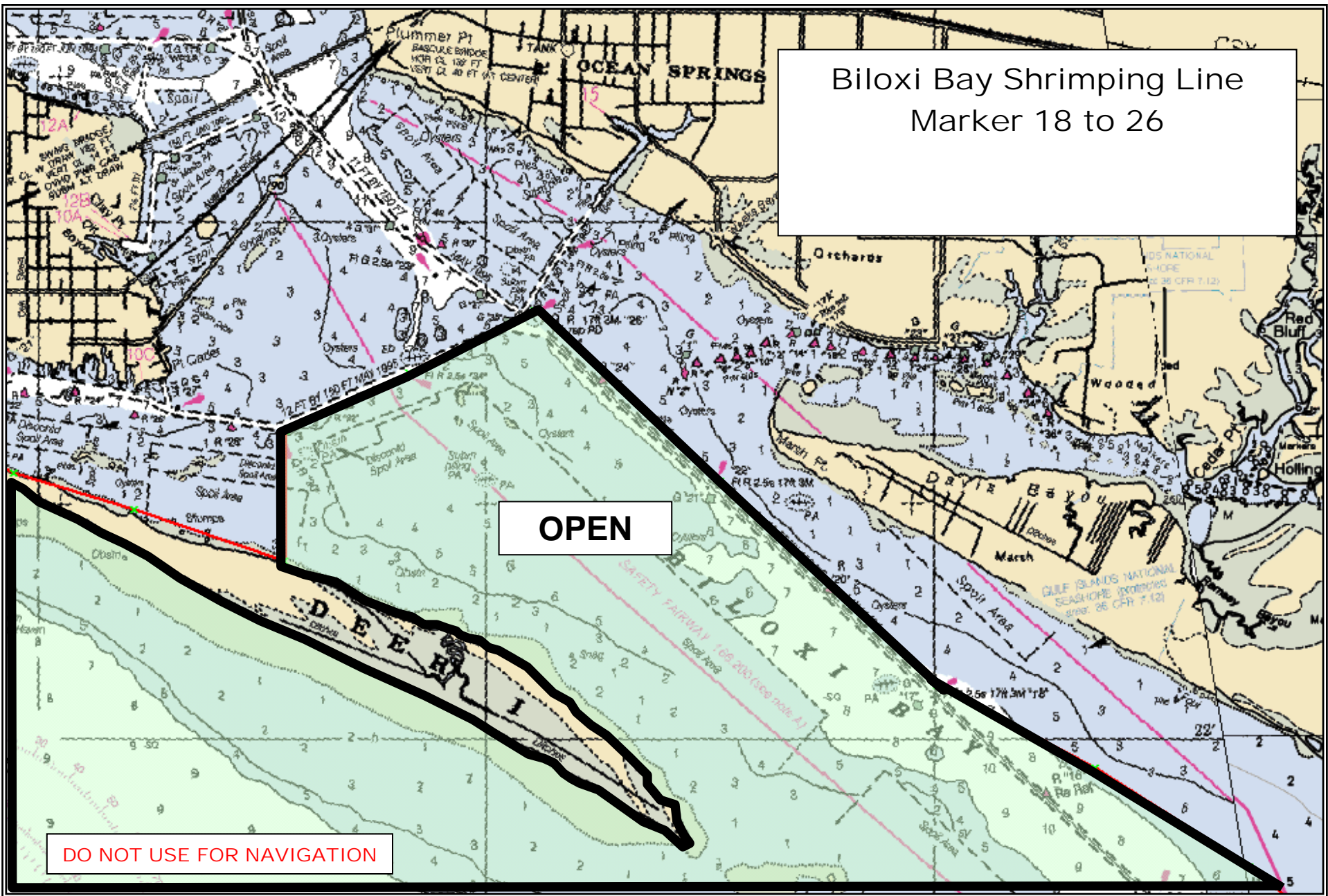
Recreational and commercial shrimp season will close at midnight, Dec. 31, 2012, north of the Intracoastal Waterway, and at midnight, April 30, 2013, south of the Intracoastal Waterway. Live-bait shrimping is open year round.

For specific information, call the Mississippi Shrimp Information Hotline at 866-938-7295, the MDMR at 228-374-5000, or write to the MDMR, 1141 Bayview Ave., Biloxi, Mississippi 39530.

The Mississippi Department of Marine Resources is dedicated to enhancing, protecting and conserving marine interests of the state by managing all marine life, public trust wetlands, adjacent uplands and waterfront areas to provide for the optimal commercial, recreational, educational and economic uses of these resources consistent with environmental concerns and social changes. Visit the MDMR online at www.dmr.ms.gov.

ATTACHED: Map of additional waters to open for shrimping on Nov. 12, 2012.

—END—



Biloxi Bay Shrimping Line
Marker 18 to 26

OPEN

DO NOT USE FOR NAVIGATION