

Date: October 21, 2020
Project: Coffee Creek Outfall Replacement – RFx # 3160003898
Owner: Mississippi Department of Marine Resources
To: Prospective Bidders
RE: Addendum No. 1 and Response to Question

This Addendum Number 1 (“Addendum”) shall be part of the Contract Documents for the above references project and modifies the Contract Documents dates September 28, 2020, with amendments and additions set forth below.

Pursuant to Section 2.17, “acknowledgement of Addendum” of the Invitations for Bids, bidders shall acknowledge receipt of the Addendum by signing and returning the addendum with the bid and by identifying the addendum number and date in the space provide for this purpose o the Bid Form (Attachment D). **Failure to do so may subject the bidder to disqualification.**

Revisions to Drawings

E-100REV2

E-200REV2

E-201REV2

Q1:

The 2-1/2” conduit that feeds the Pavilion is shown to be installed under Alternate #4 only if it is selected – is this correct?

A1:

No – the 2-1/2” conduit is to be installed under the base bid and installed as shown on the attached revised electrical drawings.

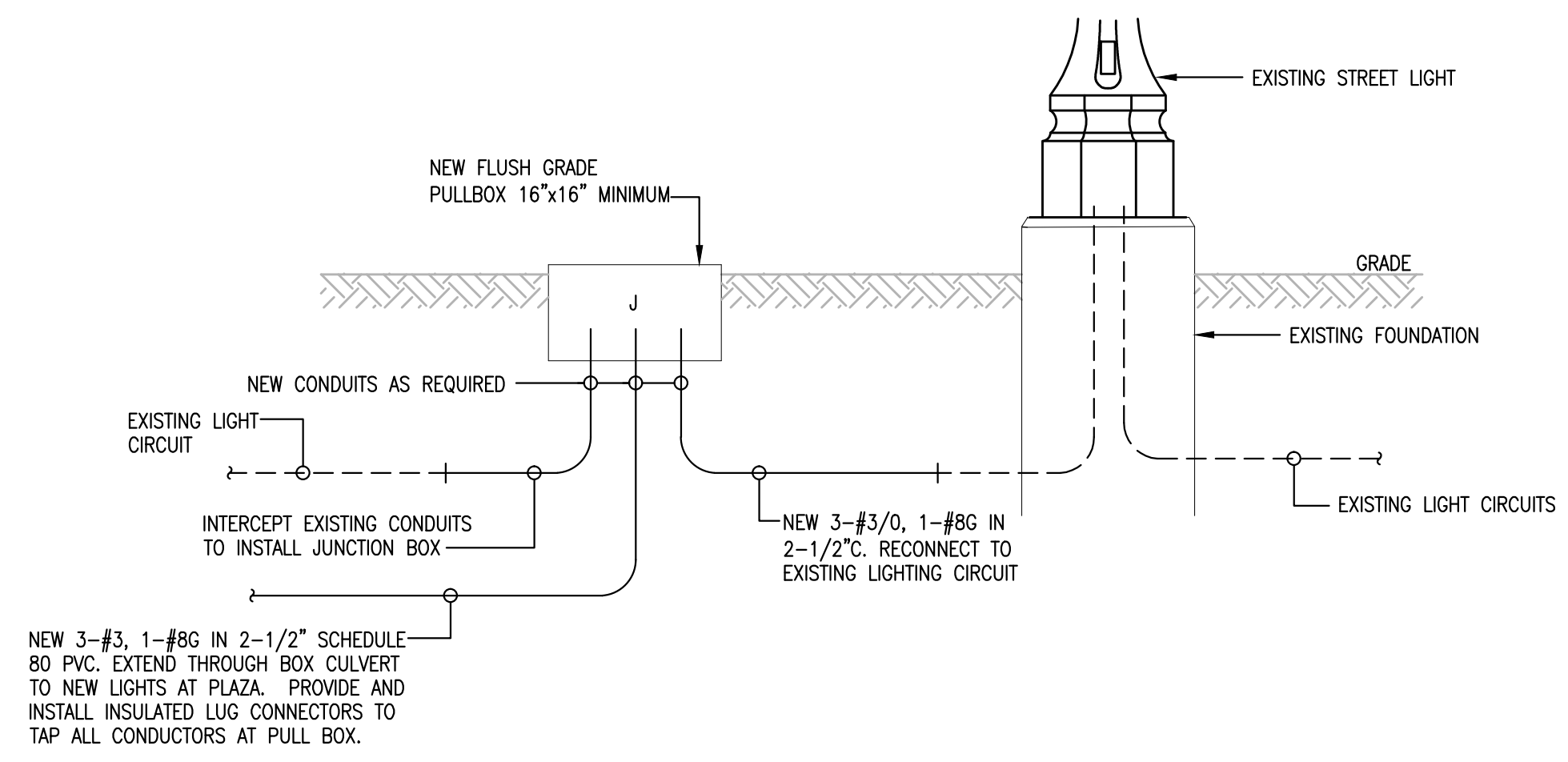
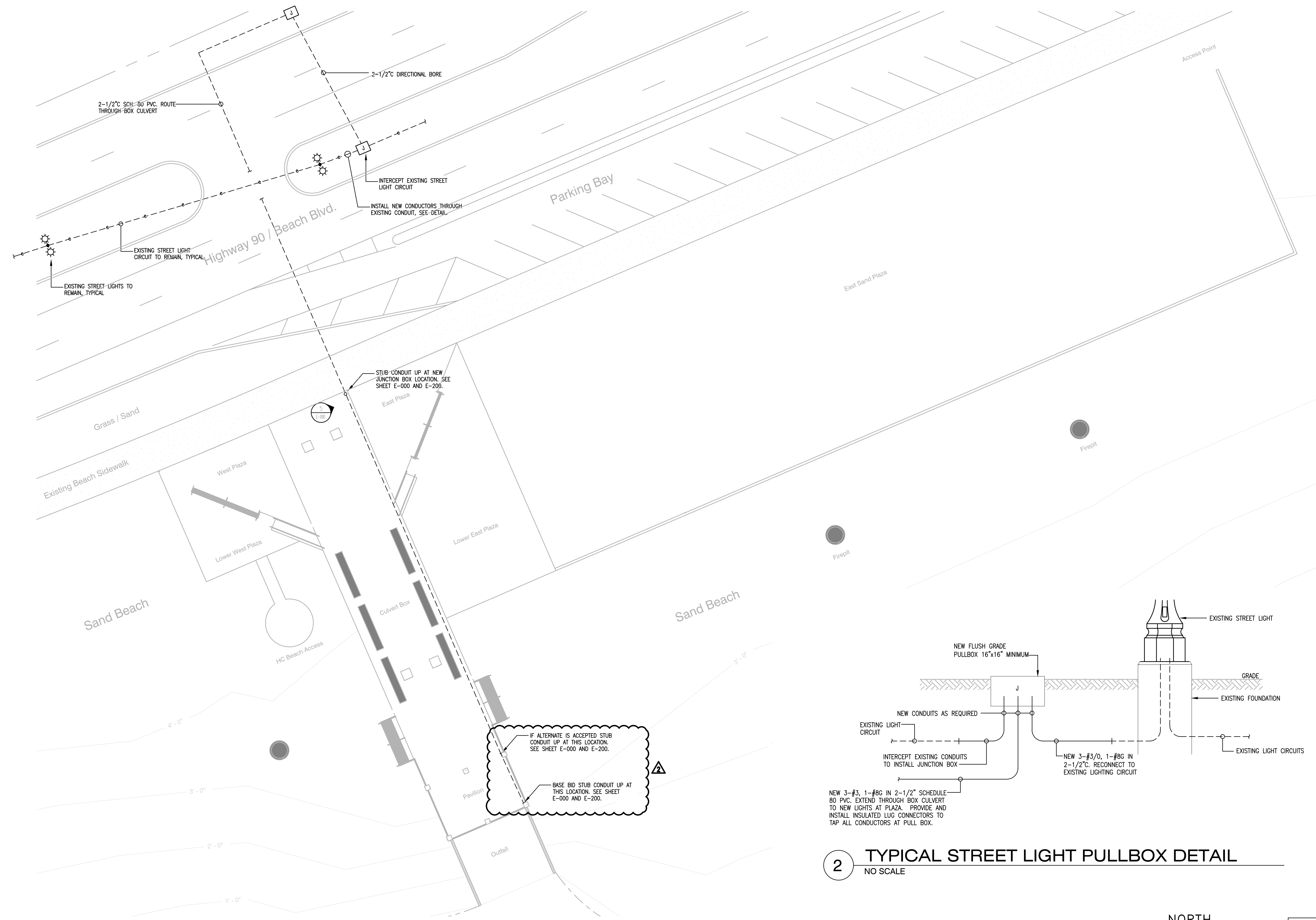
Signature



NO.	DATE	REVISION/ISSUE
2	10/16/20	C ONDUIT REVISIONS/ADDENDUM

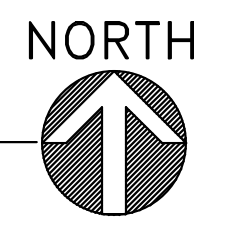
**COFFEE CREEK
STORMWATER OUTFALL**

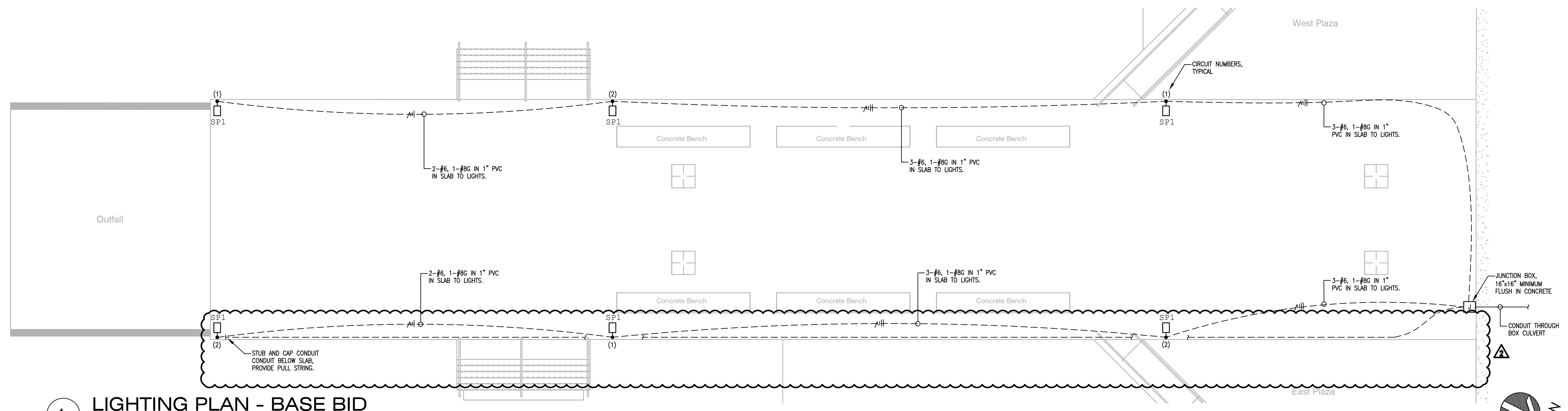
ELECTRICAL SITE PLAN	
DATE 24 APRIL, 2020	SHEET NUMBER
SCALE	E-100
DESIGN BY JGR	
CHECKED BY GPW	
PROJECT NO. 19049	



2 TYPICAL STREET LIGHT PULLBOX DETAIL
NO SCALE

1 ELECTRICAL SITE PLAN
1" = 20'-0"





1 LIGHTING PLAN - BASE BID
 1/8" = 1'-0"



NO.	DATE	REVISION/ISSUE
1	8/5/2020	BASE BID / ALTERNATE #4
2	10/16/20	CONDUIT REVISIONS/ADDENDUM

**COFFEE CREEK
 STORMWATER OUTFALL**

LIGHTING PLAN BASE BID	
DATE 24 APRIL, 2020	SHEET NUMBER
SCALE	E-200
DESIGN BY JGR	
CHECKED BY GPW	
PROJECT NO. 19049	





NO.	DATE	REVISION/ISSUE
1	8/5/2020	BASE BID / ALTERNATE #4
2	10/16/20	CONDUIT REVISIONS/ADDENDUM

**COFFEE CREEK
STORMWATER OUTFALL**

LIGHTING PLAN ALTERNATE #4	
DATE 24 APRIL, 2020	SHEET NUMBER E-201
SCALE	
DESIGN BY JGR	CHECKED BY GPW
PROJECT NO. 19049	

