



ENHANCE ★ PROTECT ★ CONSERVE

# Mississippi Advisory Commission on Marine Resources

June 21, 2022



ENHANCE ★ PROTECT ★ CONSERVE

# Employment, Contracts and Procurement Updates June 21, 2022

# Employment Updates

- Chris Graham – Contractor to Environmental/Natural Resources Specialist I – Finfish Bureau – 05.16.22
- Austin Burmaster – Contractor to Environmental/Natural Resources Specialist II – Finfish Bureau – 05.16.22
- William Larsen – Contractor to Environmental/Natural Resources Technician II – Shellfish Bureau – 05.16.22
- Katie Nelson – Environmental/Natural Resources Specialist I – Coastal Resource Management – Permitting – 06.01.22
- Donovan Dawsey – Promoted to Law Enforcement Officer II – Corporal – Marine Patrol – 06.01.22
- Curtis Norfleet – Promoted to Law Enforcement Officer II – Corporal – Marine Patrol – 06.01.22
- Michael Fitts – Promoted to Law Enforcement Officer III – Master Sergeant – Marine Patrol – 06.01.22
- Michelle Williams – Promoted to Human Resources Officer – 06.01.22
- Kristina Broussard – Promoted to ENRS Supervisor - Seafood Technology Bureau Director – 06.16.22
- Jason Rider – Promoted to ENRS Supervisor – Shellfish Bureau Director – 06.01.22
- Summer Internship Program (15 Interns) – June 1st – July 31<sup>st</sup>:

Marine Fisheries: Nathaniel Groves, Kyle Wigginton, Kailee Iwanczyk and Hailey Hudgins

Lyman Hatchery: Ethan Favre and Ian Trochesset

Coastal Resource Management: Anna Gamblin, Chaz Newman and Colbi Poulos

Coastal Restoration and Resiliency: Audrey Smith and Christian Richardson

Marine Patrol: Nicholas McNew

Public Affairs: Takya Millender

GBNERR: Jacob Krance

IT: Brock Babin

ENHANCE ★ PROTECT ★ CONSERVE



ENHANCE ★ PROTECT ★ CONSERVE

# Mississippi Advisory Commission on Marine Resources

June 21, 2022

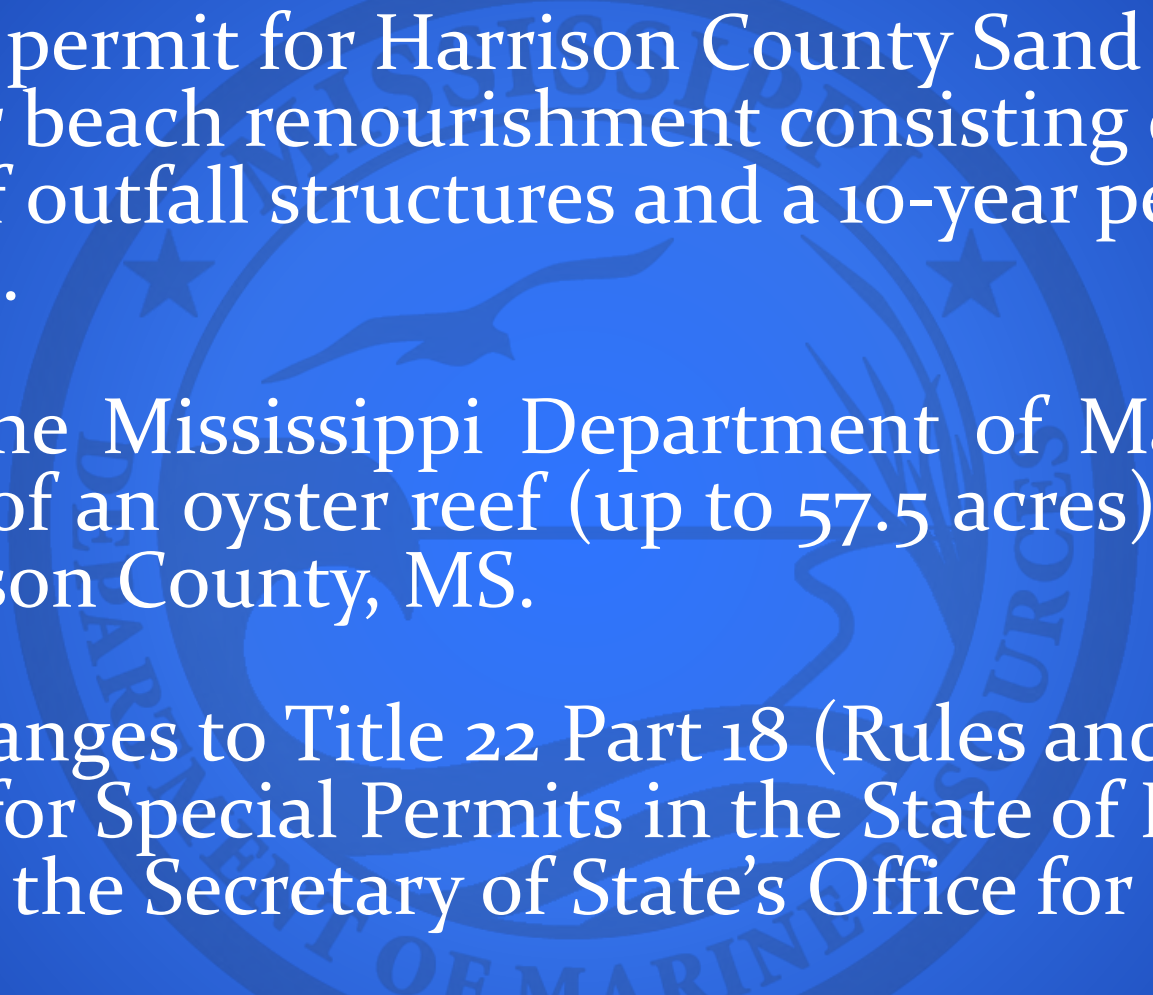


ENHANCE ★ PROTECT ★ CONSERVE

# Actions Update for June 21, 2022 Commission Meeting

# Discussed at the May 2022 meeting:

- The Commission recommended and the Director approved the following motions:
  - 1) Variance and Coastal Zone Consistency Request for the Hancock County Port and Harbor Commission for excavation, riprap, piers, 4 mooring dolphins, and dredging.
  - 2) Variance and permit for Huntington Ingalls Industries for continual maintenance dredging and new dredging/deepening, with the condition that the applicant be required to use a MDMR approved Beneficial Use Site (if available and material is suitable) in accordance with §49-27-61.
  - 3) Variance and issuance of a Certificate of Exclusion for Jackson County Port Authority for dredging, with the condition that the applicant be required to use a MDMR approved Beneficial Use Site (if available and material is suitable) in accordance with §49-27-61.

- 
- The seal of the Mississippi Department of Marine Resources is faintly visible in the background. It is a circular emblem featuring a pelican feeding its young in a nest, with the words "MISSISSIPPI DEPARTMENT OF MARINE RESOURCES" around the perimeter.
- 4) Variance and permit for Harrison County Sand Beach Authority for beach renourishment consisting of fill, borrow pits, repair of outfall structures and a 10-year permit for maintenance.
  - 5) Permit for the Mississippi Department of Marine Resources for creation of an oyster reef (up to 57.5 acres) in the St. Louis Bay in Harrison County, MS.
  - 6) Proposed changes to Title 22 Part 18 (Rules and Regulations for Special Permits in the State of Mississippi) be forwarded to the Secretary of State's Office for Notice of Intent.

## 7) State Saltwater Finfish Records:

### Conventional Tackle:

1. Rock Hind (*Epinephelus adscensionis*) – 3lbs. 10.4 oz. – Trey Tinkle
2. Smooth Puffer (*Lagocephalus laevigatus*) – 10lbs 0.0 oz. – Phillip Overman



ENHANCE ★ PROTECT ★ CONSERVE

# Mississippi Advisory Commission on Marine Resources

June 21, 2022

**Request for Permit by:**  
**Mississippi Department of Environmental**  
**Quality**  
**DMR22-000087**

- **Location: Mississippi Sound Between Bayou Bolan and Bayou Caddy, Hancock County, Mississippi, Hancock County, MS.**
- **Use District: (P) Preservation Use District**
- **Agent: FC&E Engineering**

# Project Description

- Coastal Wetland Fill (unvegetated waterbottoms)
  - Approximately 17 acres
  - Segmented riprap breakwater
  - Total length approximately 1.7 miles

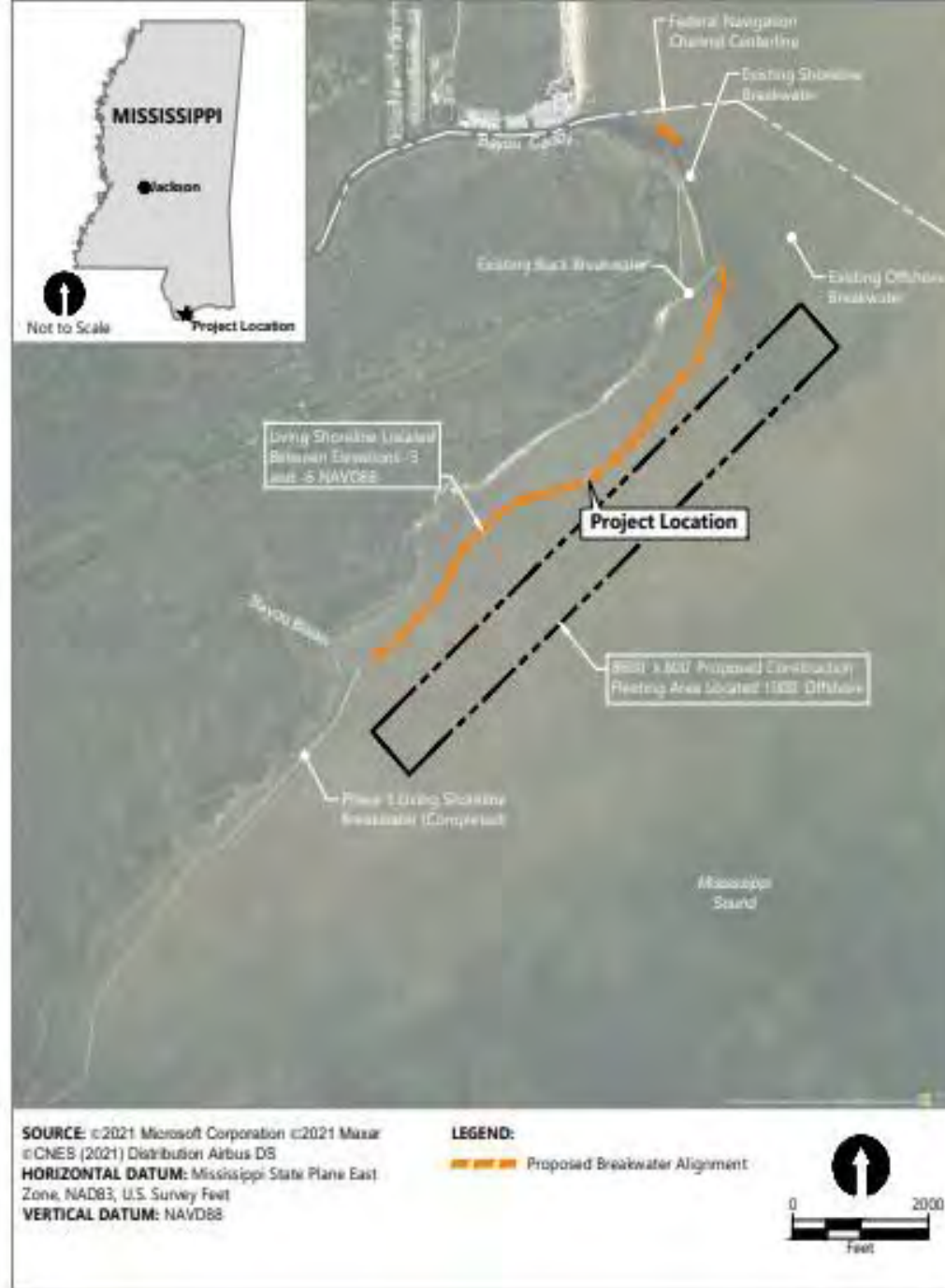
The applicant has requested a variance to Miss. Admin. Code Title 22, Part 23, Chapter 8, Section 114.01 which states, “Permanent filling of coastal wetlands below the mean high tide line because of potential adverse and cumulative environmental impacts is not authorized,”

The applicant has also requested an adjustment to the Coastal Wetlands Use plan from a P1 Preservation Use District to a S6-Special Use-Restoration District.

Justification: Miss. Admin. Code Title 22, Part 23, Chapter 8, Section 118.04 by stating the activity requires a waterfront location; there is a significant public benefit in the activity; and a public hearing was held.



Figure 1: Project Location Map





# Public and Agency Notification

- Comments...
  - Notification of this project appeared in *The Sun Herald* on March 27, April 3 and April 10, 2022 and the *Sea Coast Echo* on March 30, April 6, and April 13, 2022 and also June 1, 5, and 12, 2022.
  - No public comments received
  - A public hearing was held on Tuesday, April 26, 2022 at 5:30 p.m. at the Lakeshore Community Center located at 6440 Lower Bay Road, Bay St. Louis, MS.
  - No Public comments were received
  - MS DEQ: Currently reviewing the project
  - MS DAH: Requested a cultural resources survey
  - MS DWFP: No comments
  - MS SOS: Rent-exempt PTT lease will be required

ENHANCE ★ PROTECT ★ CONSERVE

# Recommendation

- The staff of the Department of Marine Resources has conducted a thorough evaluation of the projects and has made findings on the decision factors in accordance with the Mississippi Coastal Program (MCP). Based on the results of these findings, it has been determined that the project is consistent with the MCP because the project serves a higher public purpose by reducing impacts to adjacent marsh which provides habitat to numerous recreational and commercial marine species. The breakwaters themselves will also provide attachment sites to provide secondary productivity and provide refuge for numerous marine organisms.
- Staff requests a motion that the Commission recommend to the Executive Director:
  - Approval of the Requested Variance
  - Approval of the Requested Permit contingent on clearance from MDEQ and MDAH



ENHANCE ★ PROTECT ★ CONSERVE

# Artificial Reef Update

Travis Williams

June 21, 2022

# R/V Hermes



ENHANCE ★ PROTECT ★ CONSERVE

# NFWF Artificial Reef Project

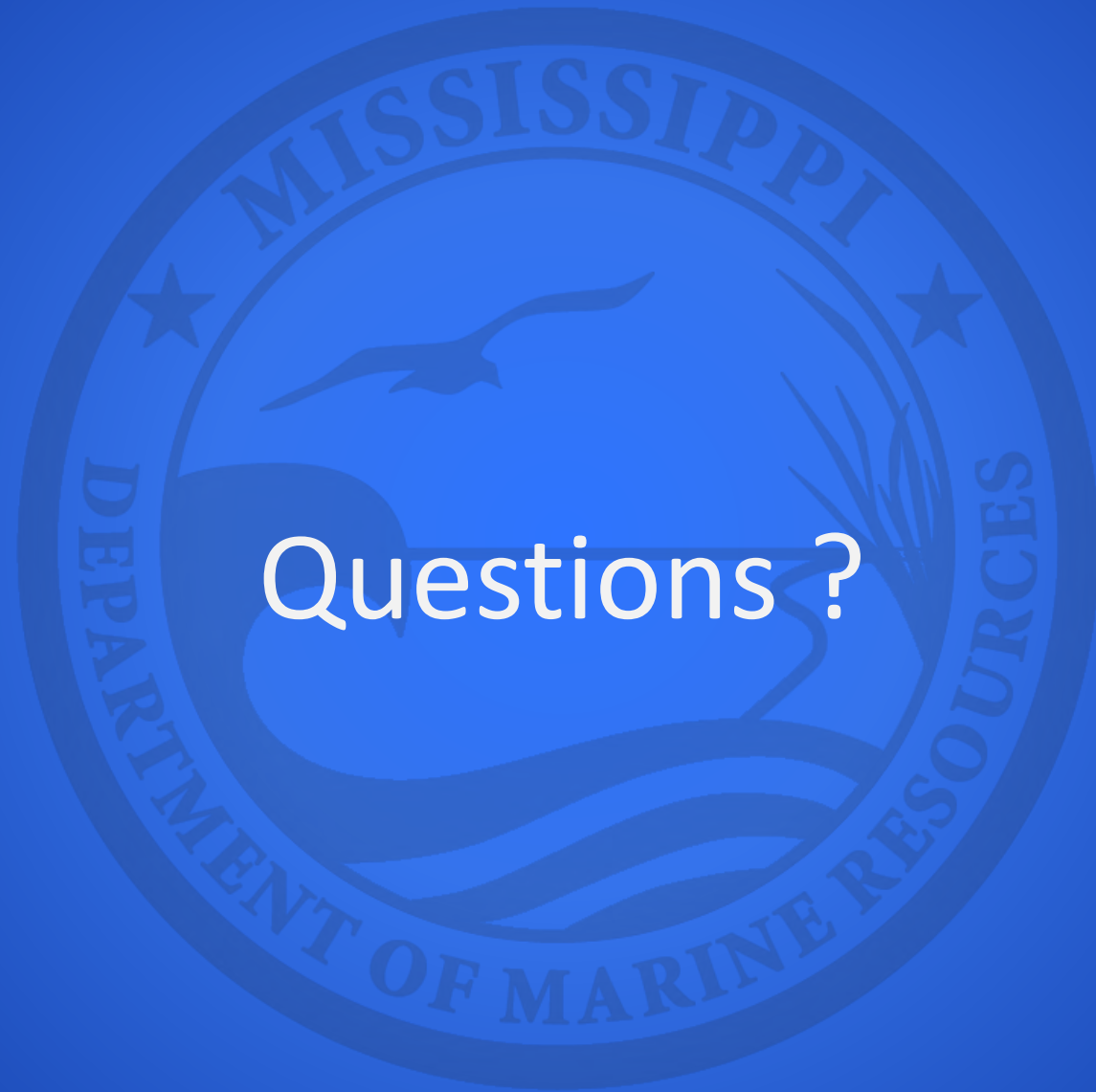


ENHANCE ★ PROTECT ★ CONSERVE

# NFWF Artificial Reef Project



ENHANCE ★ PROTECT ★ CONSERVE



Questions ?

**ENHANCE ★ PROTECT ★ CONSERVE**



ENHANCE ★ PROTECT ★ CONSERVE

# Mississippi Advisory Commission on Marine Resources

June 21, 2022



ENHANCE ★ PROTECT ★ CONSERVE

# Spotted Seatrout Endorsement Update

Marine Fisheries Staff  
June 21, 2022

K.4.

# Background

- Endorsement qualifications changed with the adoption of Title 22 Part 3 which had an effective date of May 1, 2022
- Staff have observed an increase in endorsements (52 total), 26 since the effective date of the new regulations
- The following presentation will outline current landings for the fishery and potential approaches to ensure the quota is met while also maintaining consistency in the fishery

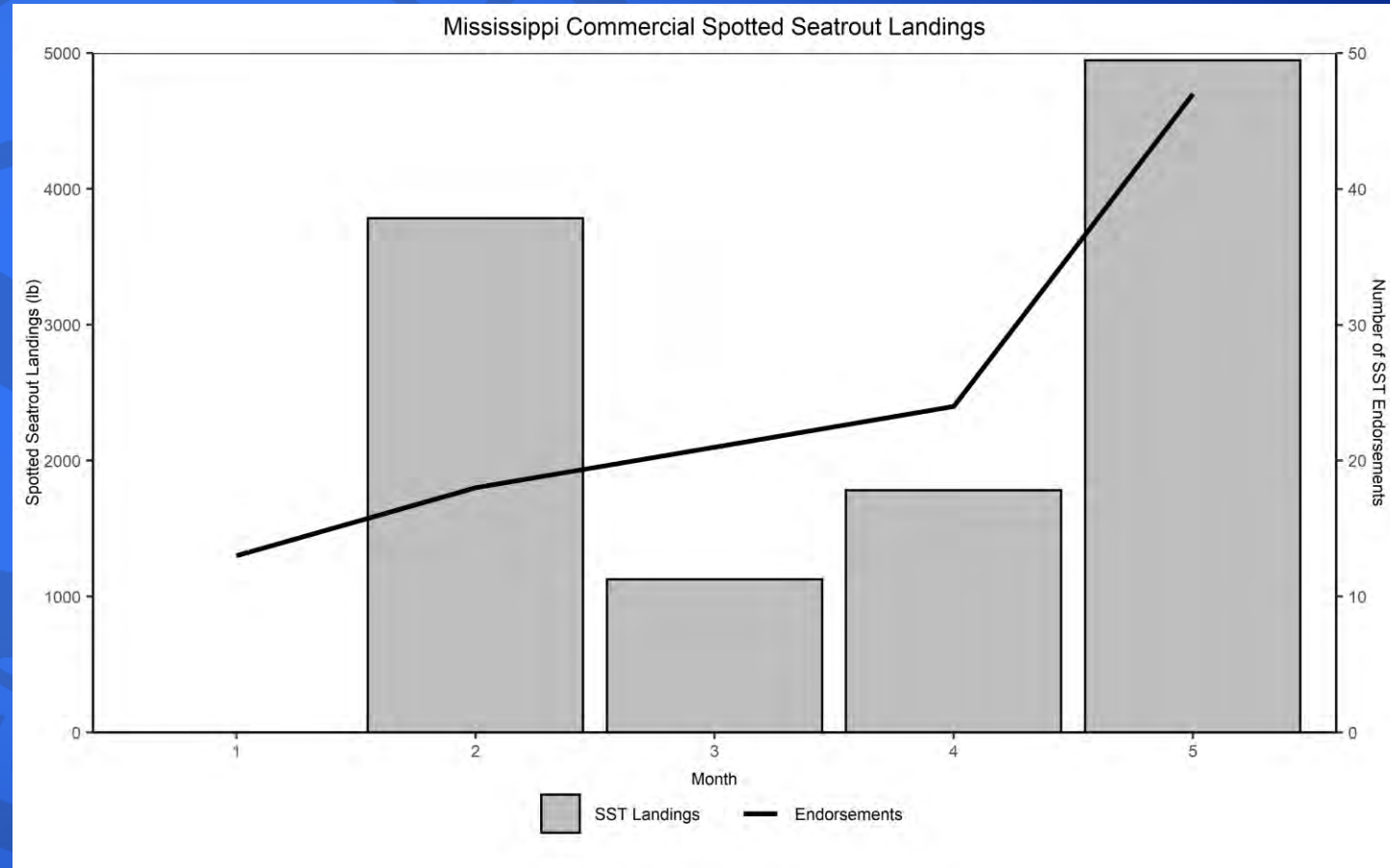
# Endorsement History

- 2014 – 2018
  - Proof of \$5,000 dollars in seafood sales in any consecutive twelve months
  - Valid for three years from date of purchase
- 2019 – 2021
  - Twenty percent income requirement, verified through Trip Ticket Program
  - Valid for one calendar year period (January – December), Hardship clause promulgated
- 2022 – Present
  - \$1,000 dollars in Finfish or \$5,000 in seafood product, verified through Trip Ticket Program
  - Valid for one calendar year period (January – December), Hardship considered based on sales one year prior to hardship

ENHANCE ★ PROTECT ★ CONSERVE

# Current SST Commercial Landings

- Landings to date –
  - 12,341 lbs
  - 52 total SST Endorsements
- Staff will continue to evaluate and project trends in the fishery and determine the need for future alterations to endorsement qualifications





ENHANCE ★ PROTECT ★ CONSERVE

# Mississippi Advisory Commission on Marine Resources

June 21, 2022



ENHANCE ★ PROTECT ★ CONSERVE

# State Saltwater Finfish Records

Trevor Moncrief

June 21, 2022

The logo is a circular seal for the Mississippi Department of Marine Resources. It features a seagull in flight over stylized waves. The words "MISSISSIPPI" and "DEPARTMENT OF MARINE RESOURCES" are inscribed around the perimeter, separated by two stars.

# Conventional Tackle

**ENHANCE ★ PROTECT ★ CONSERVE**

# Conventional Tackle Fishing Record

Blackbelly Rosefish  
*Helicolenus dactylopterus*

New Record: 2 lbs. 11.2 oz.

Angler: John Wright



MISSISSIPPI  
ENT OF MARINE R  
ENHANCE ★ PROTECT ★ CONSERVE



ENHANCE ★ PROTECT ★ CONSERVE

The logo is a circular seal for the Mississippi Department of Marine Resources. It features a central illustration of a fish jumping out of the water, with a marshy shoreline and reeds on the right. The words "MISSISSIPPI" and "DEPARTMENT OF MARINE RESOURCES" are written around the perimeter, separated by two stars.

# All Tackle

ENHANCE ★ PROTECT ★ CONSERVE

# All Tackle Fishing Record

Bigeye

*Priacanthus arenatus*

Old Record: 2 lbs. 1.12 oz.

New Record: 2 lbs. 11.52 oz.

Angler: Harley Havard

ENHANCE ★ PROTECT ★ CONSERVE



ENHANCE ★ PROTECT ★ CONSERVE



ENHANCE ★ PROTECT ★ CONSERVE

# All Tackle Fishing Record

Unicorn Filefish  
*Aluterus monoceros*

Old Record: 1 lbs. 2.06 oz.

New Record: 5 lbs. 9.8 oz.

Brandon Powell

ENHANCE ★ PROTECT ★ CONSERVE



ENHANCE ★ PROTECT ★ CONSERVE



ENHANCE ★ PROTECT ★ CONSERVE

The background features a large, faint, circular seal of the Mississippi Department of Marine Resources. The seal contains the word "MISSISSIPPI" at the top, a bird in flight in the center, and "DEPARTMENT OF MARINE RESOURCES" at the bottom. The entire slide has a blue background with wavy lines at the top.

# Required: Motion to Recommend Adoption of New State Records

**ENHANCE ★ PROTECT ★ CONSERVE**



ENHANCE ★ PROTECT ★ CONSERVE

# Mississippi Advisory Commission on Marine Resources

June 21, 2022