



ENHANCE ★ PROTECT ★ CONSERVE

Mississippi Advisory Commission on Marine Resources

February 14, 2023



ENHANCE ★ PROTECT ★ CONSERVE

Employment, Contracts and Procurement Updates February 14, 2023

Employment Updates

Promotions

- Chris Graham – Promoted to ENRS II - January 16, 2023 – Marine Fisheries (Finfish)
- Katie Nelson – Promoted ENRS II - February 1, 2023 – Coastal Resources Management (Permitting)
- Kaitlyn Payne – Promoted ENRS I - February 1, 2023 – Coastal Resources Management (Permitting)
- Anna Gamblin – Promoted to ENRS II – February 16, 2023 – Coastal Resources Management (Permitting)

New Hires

- Laura Moncrief – Started February 1, 2023 – Program Specialist IV - Coastal Resources Management
- Ashton Sipriano – Started February 1, 2023 - Part-time Contractor - Marine Fisheries (Finish)



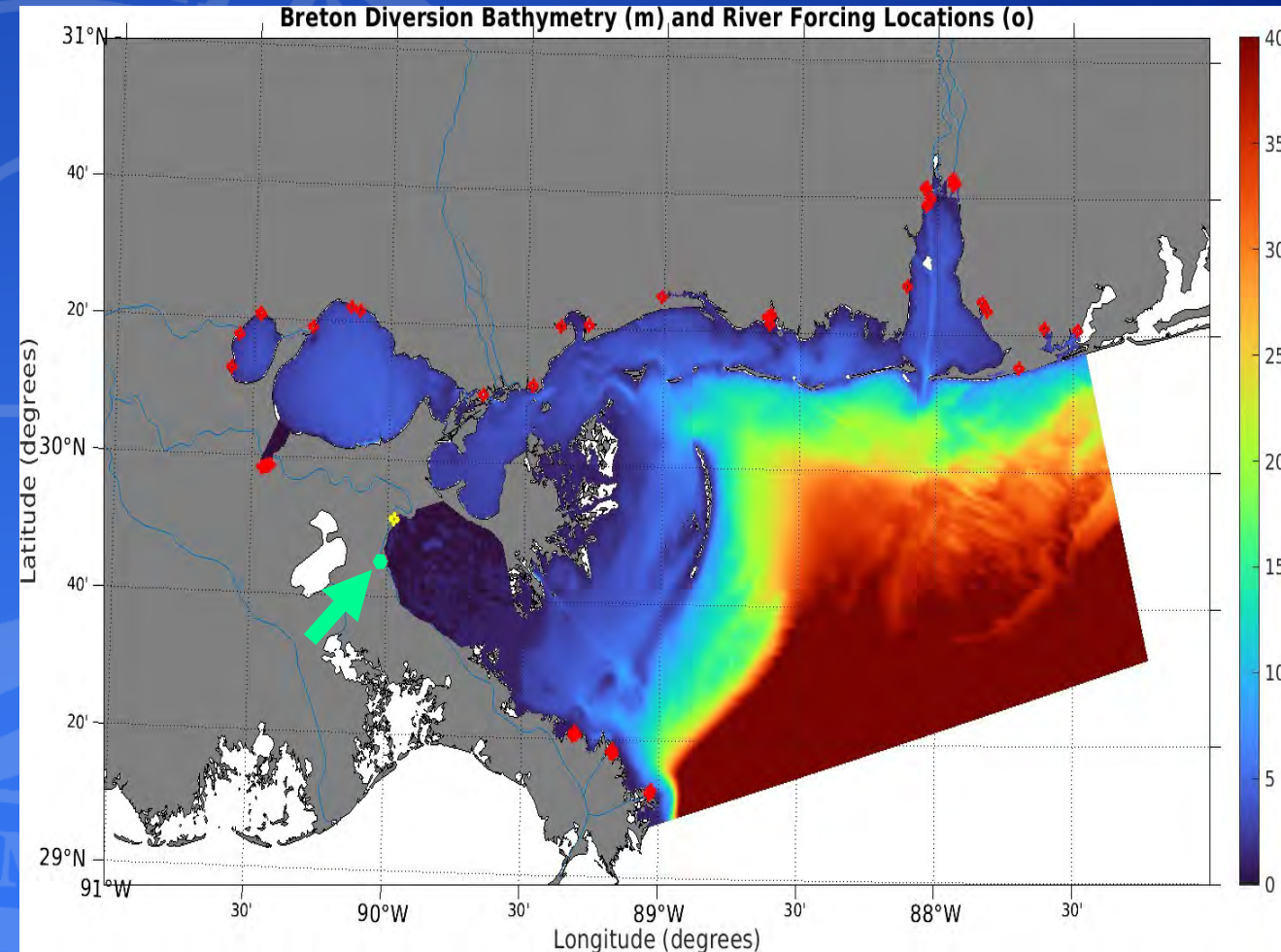
ENHANCE ★ PROTECT ★ CONSERVE

Mississippi Advisory Commission on Marine Resources

February 14, 2023

Proposed Mid Breton Diversion (MBrSD)

- The Mid-Breton Sediment Diversion is a proposed structure intended to rebuild marshes and is not a control structure like the Bonnet Carré Spillway
- Similar structure (Mid-Barataria) has had permit approved December 2022
- Mid-Breton Sound Permit within the EIS draft phase
- USM model used to investigate potential Mid-Breton sediment structure impacts

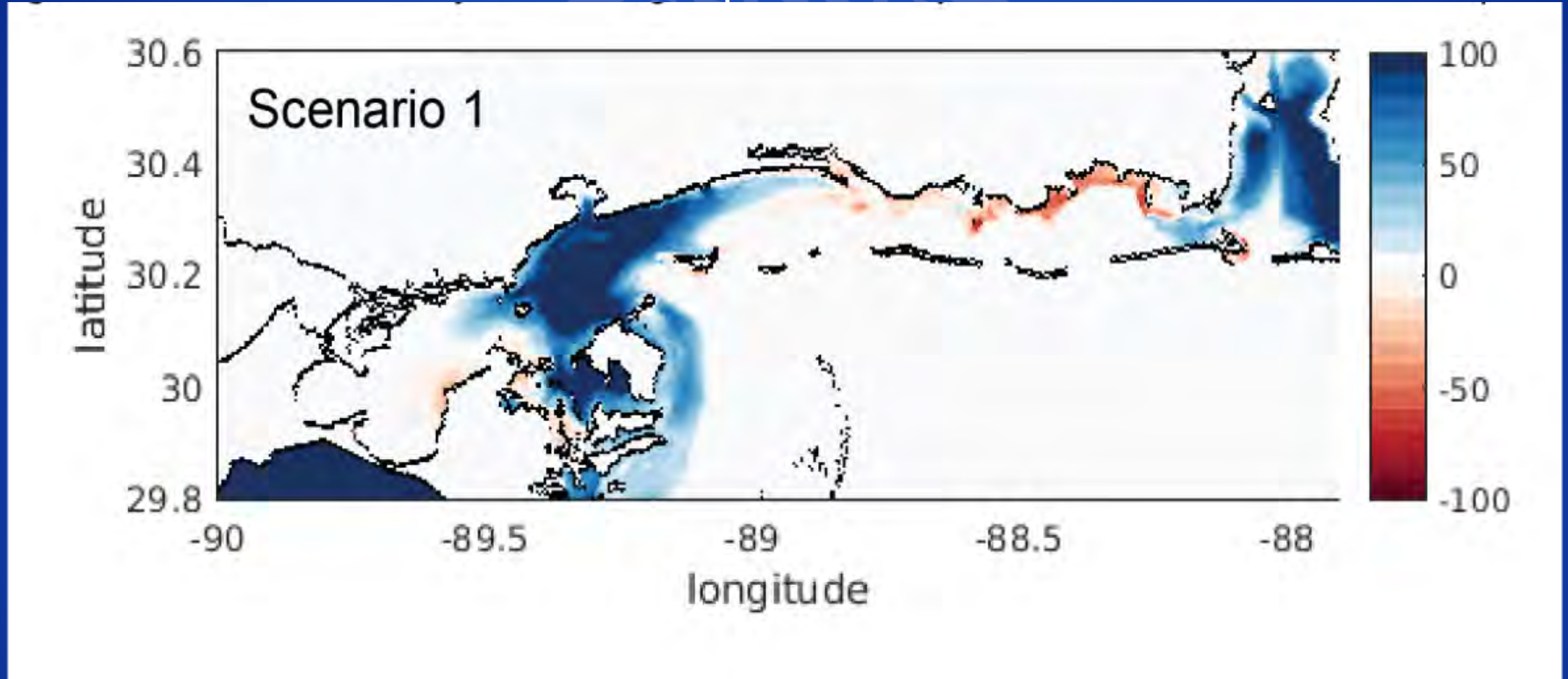


Complex model with confident results

Scenario 1 - Model projects a significant increase in cumulative days of $S < 5$ ppt within the Western and Central Mississippi Sound when the MBrSD is active. A notable increase in cumulative days is also indicated in eastern Mobile Bay.

Scenarios 2 and 3 - Model projects mixed results of minor increases and decreases throughout the Mississippi Sound, indicating that the MBrSD did not further degrade the already low bottom salinity conditions in place during this extremely atypical year for riverine freshwater input.

Change in total cumulative days of average bottom salinity <5 ppt because of MBrSD operation



Scenario 1: Representative River Inputs + MBrSD open compared to Representative River Inputs

ENHANCE ★ PROTECT ★ CONSERVE



ENHANCE ★ PROTECT ★ CONSERVE

Mississippi Advisory Commission on Marine Resources

February 14, 2023



ENHANCE ★ PROTECT ★ CONSERVE

Actions Update for February 14, 2023 Commission Meeting

Discussed at the January 2023 meeting:

- The Commission recommended and the Director approved the following motions:
 - 1) Approval of the requested variance and permit as requested by Mike Fitzpatrick for the construction of a jetty 90' in length in the St. Louis Bay, located at 439 1st Ave, Harrison County, Pass Christian, MS.
 - 2) Approval of the following State Saltwater Finfish Records.
 - a. All Tackle
 1. Scrawled Filefish (*Aluterus scriptus*) – 3 lbs. 2.45 oz. – Tommy Phelps



ENHANCE ★ PROTECT ★ CONSERVE

Mississippi Advisory Commission on Marine Resources

February 14, 2023

Wetland Permitting Actions 2022

Total Actions	836
Regulated Activities/ CZ Consistency Determinations	708
Reviews/ Pre-Application Meetings	84
Violations	41

Wetland Permitting Actions

Comparison

	2nd half 2020	2nd half 2021	2nd half 2022	2020	2021	2022
Total Actions	371	364	366	672	836	836
Regulated Activities/ CZ Consistency Determinations	313	317	314	562	753	708
Reviews/ Pre-Application Meetings	52	34	28	96	64	84
Violations	6	13	24	15	19	41

Violation Details

Year	2020	2021	2022
Total Reported/Found	15	19	41
Actual	4	7	22
Presented to MACMR	2	3	0
Fines Assessed	\$500	\$1000*	\$0

*Fine deferred if restoration
completed as ordered



ENHANCE ★ PROTECT ★ CONSERVE

Mississippi Advisory Commission on Marine Resources

February 14, 2023



ENHANCE ★ PROTECT ★ CONSERVE

Mississippi

Department of Marine Resources

Agency Financial Results
as of January 31, 2023

Key Metrics:

- State Revenue of \$4.8M
- Agency Revenue of \$20.1M
- State Net Income of \$484K
- Agency Net Income of \$440K

MISSISSIPPI DEPARTMENT OF MARINE RESOURCES					
Income Statement - Fiscal Year 2023					
As of January 31, 2023					
	Federal :				
	GOMESA				
	PHII:				
	NFWF:		Operating		
	State	Non-Federal:	Subtotal	Tidelands	Total DMR
Revenue:					
Off-road Fuel Tax	3,050,000	-	3,050,000	-	3,050,000
Federal/NonFederal Grants	114,011	3,262,620	3,376,631	-	3,376,631
Sales Revenue	789,633	4,603	794,236	1,973	796,209
Indirect Cost Recovery	686,792	-	686,792	-	686,792
Other Revenue	250,464	1,508,284	1,758,747	10,529,951	12,288,698
Current Budget Year Revenue:	4,890,899	4,775,507	9,666,406	10,531,924	20,198,330
Expenditures:					
Salaries, Wages, Fringe	3,478,913	1,986,102	5,465,015	625,849	6,090,864
Travel	17,973	33,263	51,236	3,586	54,822
Contractual Services	615,574	1,299,855	1,915,429	480,826	2,396,255
Commodities	193,451	972,368	1,165,819	65,694	1,231,512
Other than Equipment	10,072	-	10,072	15,109	25,181
Equipment	43,155	237,618	280,773	57,027	337,800
Vehicles	38,892	69,619	108,511	220,285	328,796
Subsidies, Loans, and Grants	8,535	6,052,456	6,060,991	3,232,081	9,293,072
Current Budget Year Expenditures:	4,406,565	10,651,281	15,057,845	4,700,456	19,758,302
Current Budget Year Net Income/(Loss):	\$ 484,334	\$ (5,875,773)	\$ (5,391,439)	\$ 5,831,468	\$ 440,028

Financial Budget Comparison

- After seven months of Fiscal Year 2023:

MISSISSIPPI DEPARTMENT OF MARINE RESOURCES									
2023 Budget Comparison									
As of January 31, 2023									
	Actual Year to Date Expenditures			Budget Year Totals			Percent Remaining		
	Operating	Tidelands	Total	Operating	Tidelands	Total	Operating	Tidelands	Total
Expenditures:									
Salaries, Wages, Fringe	\$ 5,465,015	\$ 625,849	\$ 6,090,864	\$ 12,323,762	\$ 1,672,239	\$ 13,996,001	55.7%	62.6%	56.5%
Travel	51,236	3,586	54,822	168,711	25,000	193,711	69.6%	85.7%	71.7%
Contractual Services	1,915,429	480,826	2,396,255	7,793,250	1,651,000	9,444,250	75.4%	70.9%	74.6%
Commodities	1,165,819	65,694	1,231,512	3,086,978	360,000	3,446,978	62.2%	81.8%	64.3%
Other than Equipment	10,072	15,109	25,181	139,522	15,109	154,631	92.8%	0.0%	83.7%
Equipment	280,773	57,027	337,800	669,605	175,000	844,605	58.1%	67.4%	60.0%
Vehicles	108,511	220,285	328,796	170,000	250,000	420,000	36.2%	11.9%	21.7%
Wireless Devices	-	-	-	6,250	-	6,250	100.0%	0.0%	100.0%
Subsidies, Loans, and Grants	6,060,991	3,232,081	9,293,072	99,833,422	8,306,899	108,140,321	93.9%	61.1%	91.4%
Total Expenditures:	\$ 15,057,845	\$ 4,700,456	\$ 19,758,302	\$ 124,191,500	\$ 12,455,247	\$ 136,646,747	87.9%	62.3%	85.5%

- Operating Funds have 87.9% of Budget remaining
- Tidelands Trust Fund has 62.3% of Budget remaining



ENHANCE ★ PROTECT ★ CONSERVE

Mississippi Advisory Commission on Marine Resources

February 14, 2023



ENHANCE ★ PROTECT ★ CONSERVE

State Saltwater Finfish Records

Trevor Moncrief
February 14, 2023

The logo of the Mississippi Department of Marine Resources is a circular seal. It features a blue background with a white silhouette of a pelican in flight. The words "MISSISSIPPI" and "DEPARTMENT OF MARINE RESOURCES" are written in a circular path around the pelican. Two stars are positioned on the left and right sides of the seal.

Conventional Tackle Record

ENHANCE ★ PROTECT ★ CONSERVE

Conventional Tackle Fishing Record

Mutton Snapper
Lutjanus analis

New Record: 5 lbs. 8.8 oz.

Angler: John Montgomery



ENHANCE ★ PROTECT ★ CONSERVE



ENHANCE ★ PROTECT ★ CONSERVE

The background features a large, faint, circular seal of the Mississippi Department of Marine Resources. The seal contains the text "MISSISSIPPI" at the top and "DEPARTMENT OF MARINE RESOURCES" at the bottom, separated by two stars. The central image of the seal depicts a bird in flight over wavy lines representing water.

Fly Fishing Record

ENHANCE ★ PROTECT ★ CONSERVE

Fly Fishing Record

Sheepshead
Archosargus probatocephalus

Old Record: 7 lbs. 12 oz.
New Record: 8 lbs. 1.6 oz.

Angler: Doug Borries



ENHANCE ★ PROTECT ★ CONSERVE



ENHANCE ★ PROTECT ★ CONSERVE

The background features a large, faint, circular seal of the Mississippi Department of Marine Resources. The seal contains the word "MISSISSIPPI" at the top, a bird in flight in the center, and "DEPARTMENT OF MARINE RESOURCES" at the bottom. The entire slide has a blue background with wavy lines at the top.

Motion to Recommend Adoption of New State Record

ENHANCE ★ PROTECT ★ CONSERVE



ENHANCE ★ PROTECT ★ CONSERVE

Mississippi Advisory Commission on Marine Resources

February 14, 2023