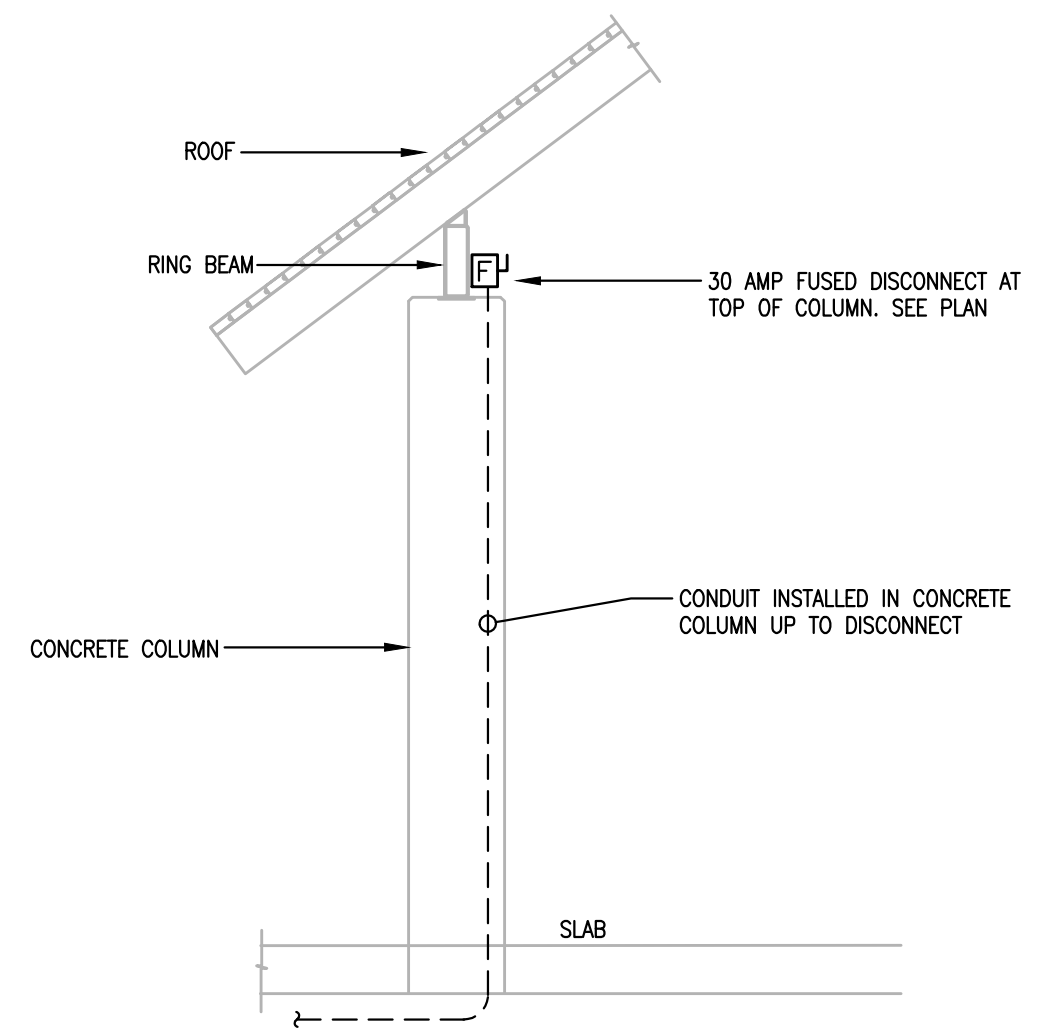


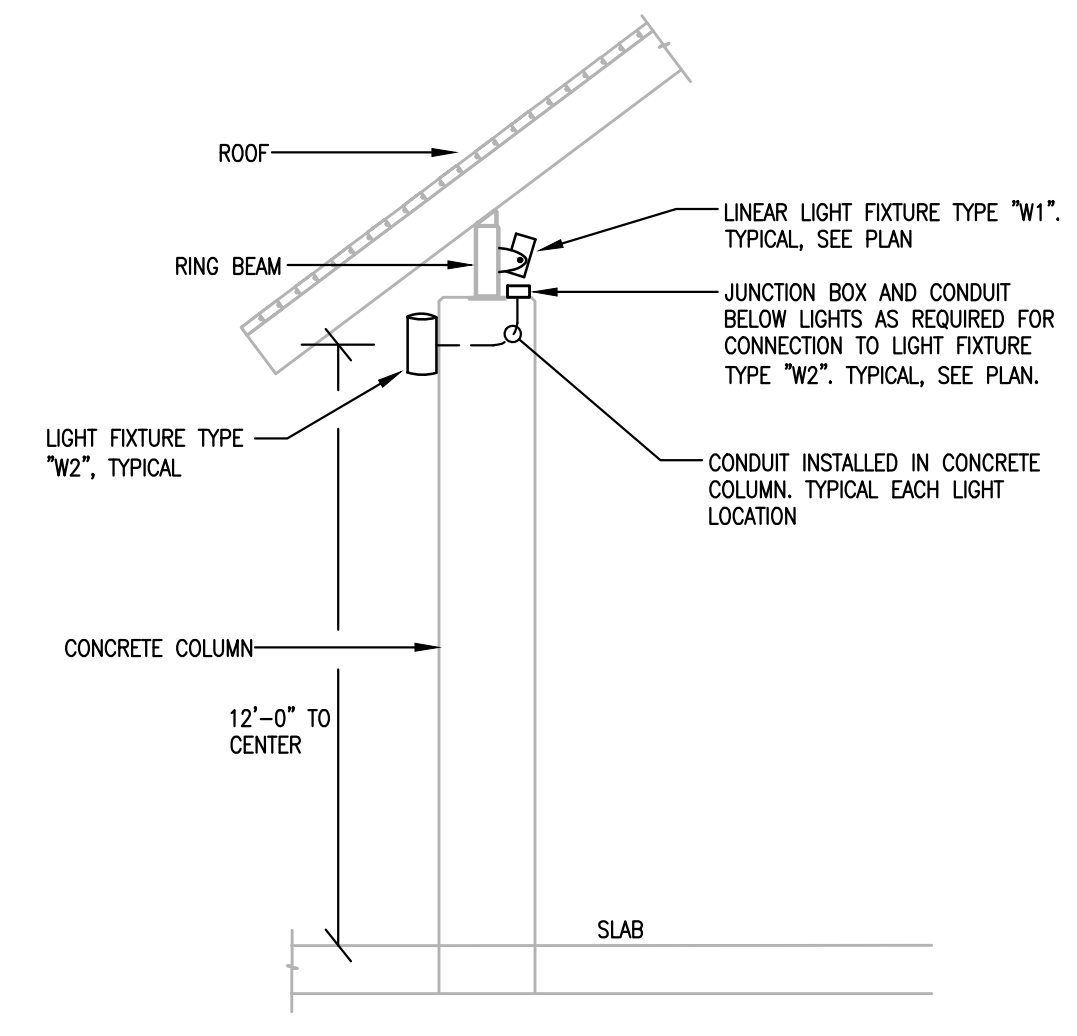


ELECTRICAL LEGEND	
LIGHTING	CONDUIT AND WIRE
EXISTING STREET LIGHT TO REMAIN	CONDUIT CONCEALED IN WALL OR COLUMN
WALL MOUNTED FIXTURE	CONDUIT BELOW GRADE OR CONCEALED IN COLUMN
EXISTING POLE MOUNTED FIXTURE TO REMAIN	CONDUIT EXPOSED AND PAINTED
SURFACE/STRUCTURE MOUNTED FIXTURE	CONDUIT UP
SWITCHGEAR	CONDUIT DOWN
JUNCTION BOX	CONTINUATION OF CONDUIT RUN
FUSED SAFETY SWITCH NEMA 3R AT WET LOCATIONS	CIRCUIT CONDUCTORS IN CONDUIT
EXISTING JUNCTION/PULL BOX TO REMAIN	MULTIPLE CIRCUIT CONDUCTORS IN CONDUIT WITH NEUTRALS
	GROUND CONDUCTORS IN CONDUIT
	EXISTING CONDUIT TO REMAIN

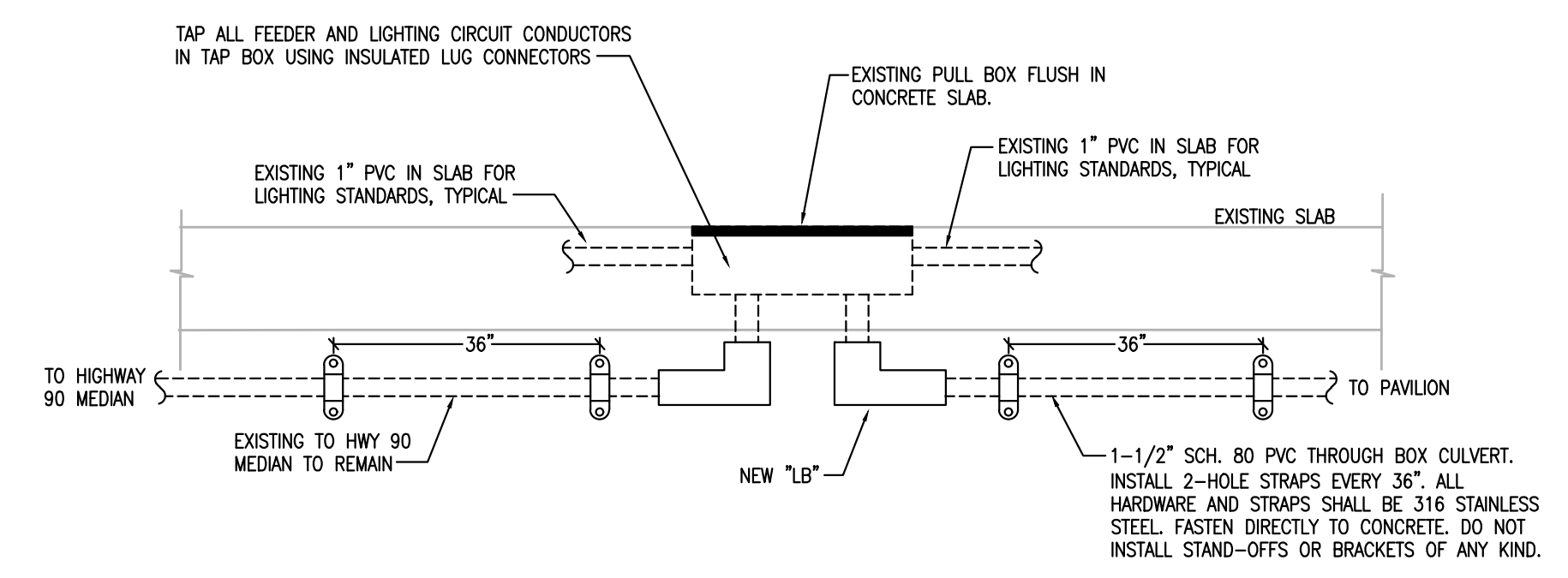
LUMINAIRE SCHEDULE					
MARK	LAMPS	MOUNTING	DESCRIPTION	MANUFACTURER	EQUALS
W1	LED	SURFACE BEAM	LED, EXTERIOR ADJUSTABLE FLOOD	LUMENFACADE LOGH-HO-120-48-40K-30x30-WAMH6-CC-NO-ETE CABLES	OR PRE-APPROVED EQUAL
W2	LED	WALL, 12'-0" AFF TO CENTER	LED, EXTERIOR DOWN LIGHT	BEGA LIGHTING 33816-K4-CUSTOM COLOR	OR PRE-APPROVED EQUAL



1 DISCONNECT INSTALLATION DETAIL
NO SCALE



2 LIGHT FIXTURE INSTALLATION DETAIL
NO SCALE



3 PULLBOX DETAIL AT PLAZA
NO SCALE

NO.	DATE	REVISION/ISSUE

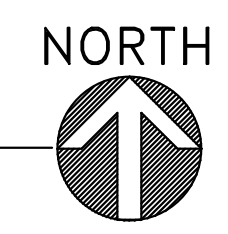
**COFFEE CREEK
STORMWATER OUTFALL**

ELECTRICAL LEGEND, SCHEDULE, AND DETAILS	
DATE 12 DEC., 2022	SHEET NUMBER E-100
SCALE	
DRAWN BY WH	CHECKED BY GPW
PROJECT NO. 19049	





1 ELECTRICAL SITE PLAN
1" = 20'-0"



COVINGTON
CIVIL AND ENVIRONMENTAL
2300 14TH STREET
GULFPORT, MISSISSIPPI 39501
Office: (228)396-0486



NO.	DATE	REVISION/ISSUE

**COFFEE CREEK
STORMWATER OUTFALL**

ELECTRICAL SITE PLAN

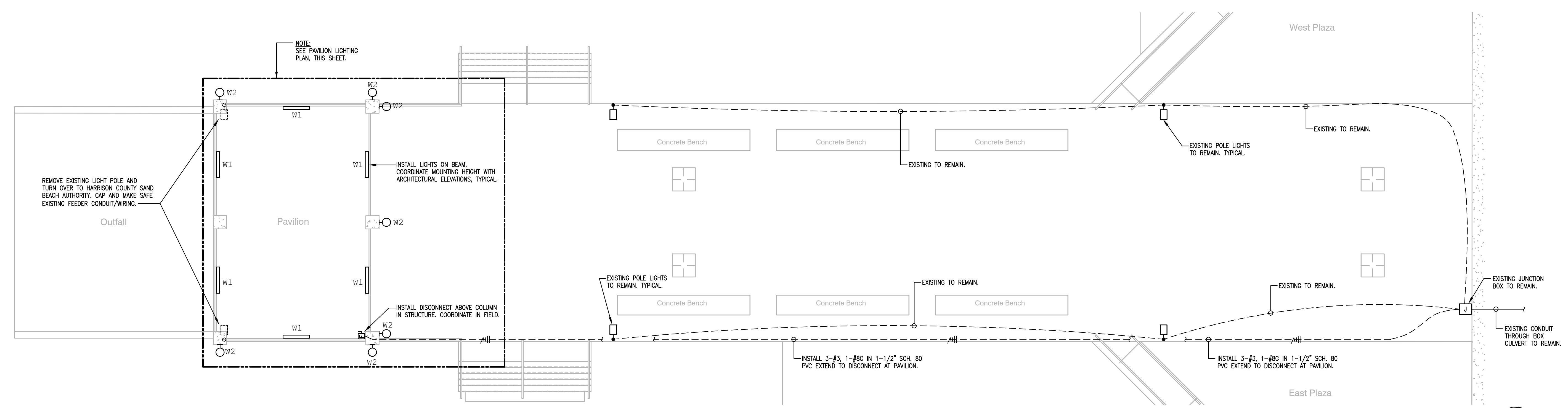
DATE 12 DEC., 2022	SHEET NUMBER
SCALE	E-101
DESIGN BY WH	
CHECKED BY GPW	
PROJECT NO. 19049	



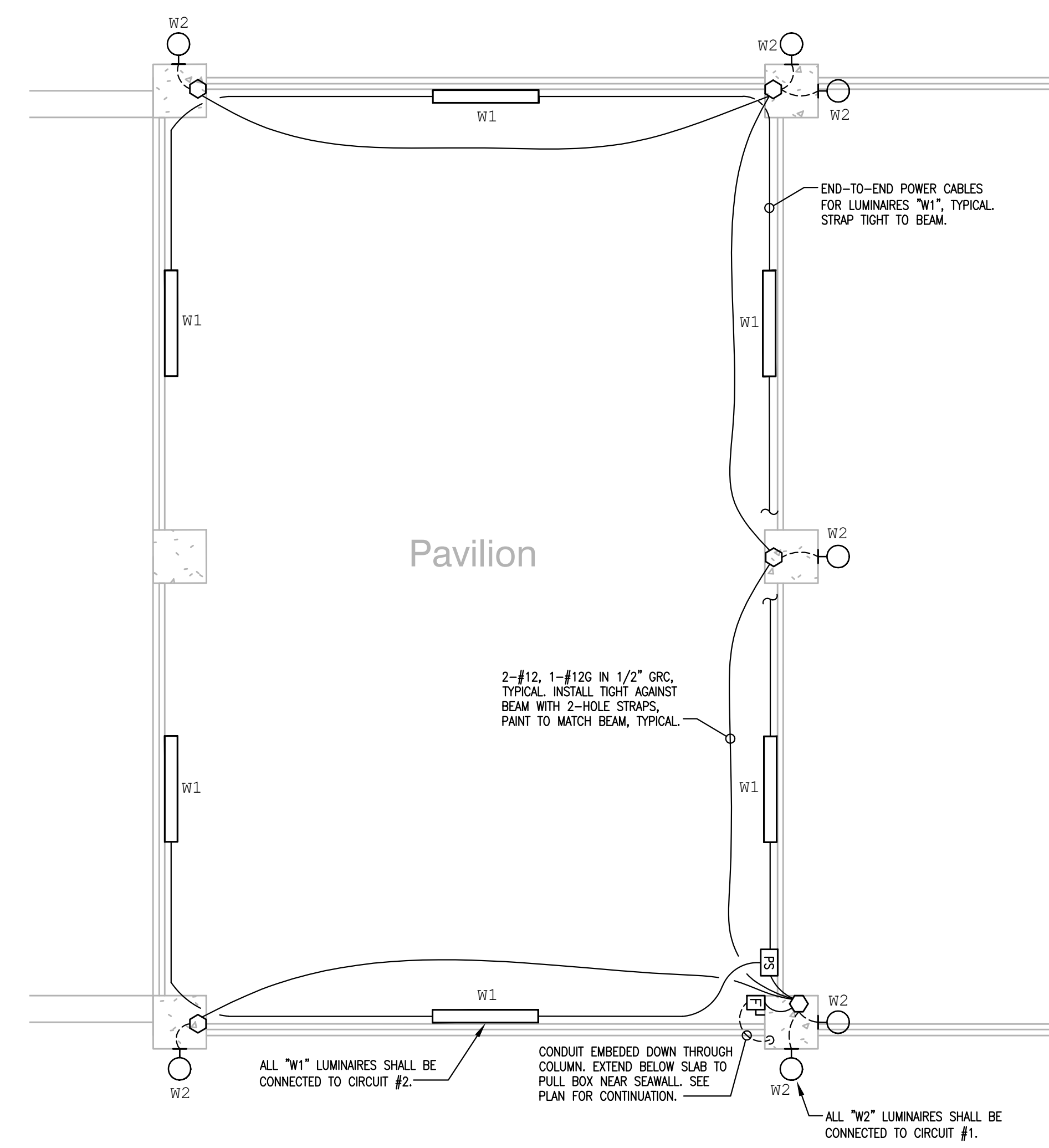
NO.	DATE	REVISION/ISSUE

**COFFEE CREEK
 STORMWATER OUTFALL**

LIGHTING PLAN	
DATE 12 DEC., 2022	SHEET NUMBER E-102
SCALE	
DESIGN BY WH	CHECKED BY GPW
PROJECT NO. 19049	



1 PAVILION LIGHTING PLAN
 1/8" = 1'-0"



2 PAVILION LIGHTING PLAN
 1/4" = 1'-0"

